

Insulated Panel Systems  
North America

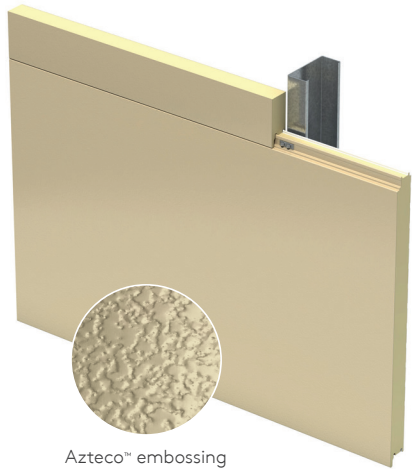
# KS Series Data Sheet

Azteco™ / Micro-Rib / Mini Micro-Rib / Mini-Wave / Shadowline

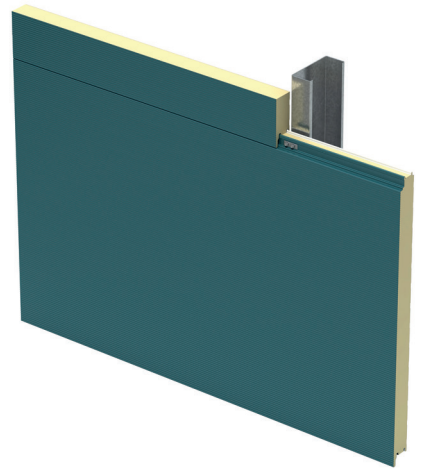
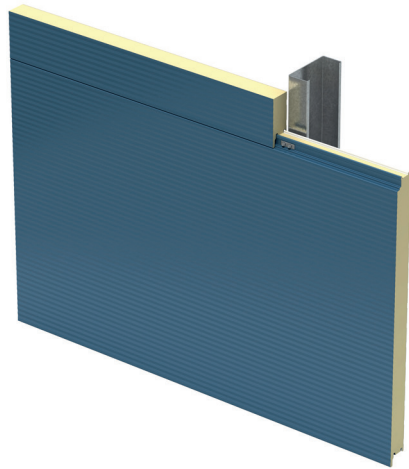


# KS Series Data Sheet

## Insulated Wall Panel System



Azteco™ embossing



### Product Specification

#### KS Azteco™

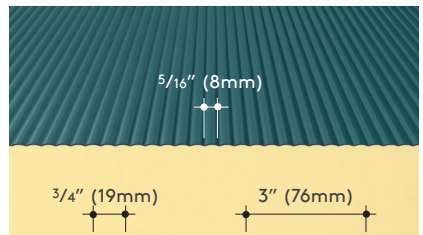
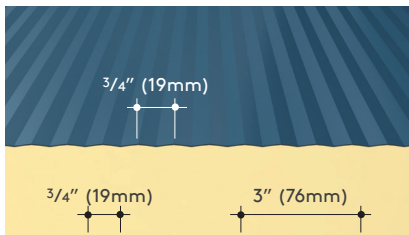
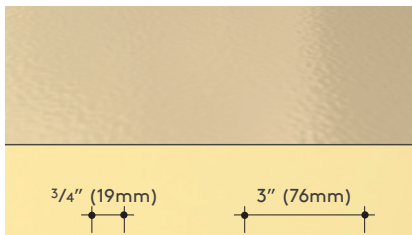
Profile:	Exterior: Flat Interior: Shadowline
Embossing:	Exterior: Azteco™ Interior: Stucco or non-embossed
Gauge:	Exterior: 26, 24, 22 ga Interior: 26, 24, 22 ga
Post fabrication (optional):	Trimless ends (Manufacturing limitations apply. Contact us for detailed information)

#### KS Micro-Rib

Profile:	Exterior: Micro-Rib Interior: Shadowline
Embossing:	Exterior: Stucco or non-embossed Interior: Stucco or non-embossed
Gauge:	Exterior: 24, 22 ga Interior: 26, 24, 22 ga
Post fabrication (optional):	Trimless ends, folded corners, transverse bends (Manufacturing limitations apply. Please contact us for detailed information)

#### KS Mini Micro-Rib

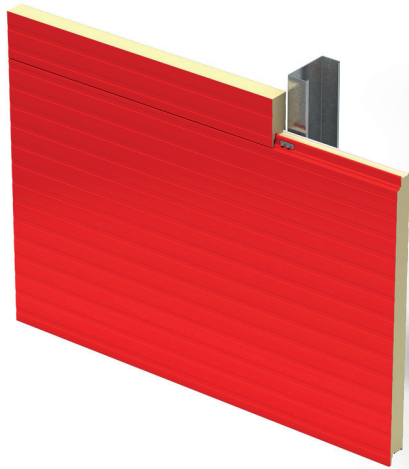
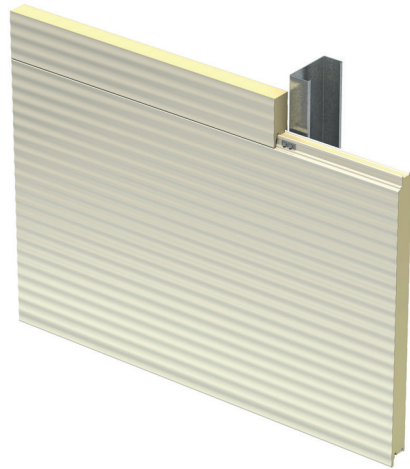
Profile:	Exterior: Mini Micro-Rib Interior: Shadowline
Embossing:	Exterior: Non-embossed Interior: Stucco or non-embossed
Gauge:	Exterior: 24 ga Interior: 26, 24, 22 ga
Post fabrication (optional):	Trimless ends, folded corners, transverse bends (Manufacturing limitations apply. Please contact us for detailed information)





# KS Series Data Sheet

## Insulated Wall Panel System



### KS Mini-Wave

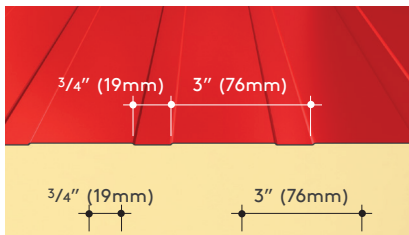
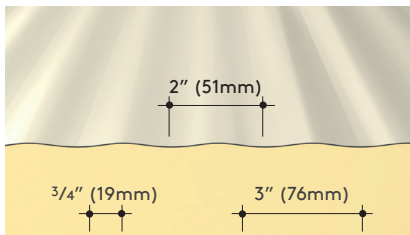
Profile:	Exterior: Mini-Wave Interior: Shadowline
Embossing:	Exterior: Stucco or non-embossed Interior: Stucco or non-embossed
Gauge:	Exterior: 24, 22 ga Interior: 26, 24, 22 ga
Post fabrication (optional):	N/A

### KS Shadowline

Profile:	Exterior: Shadowline Interior: Shadowline
Embossing:	Exterior: Stucco or non-embossed Interior: Stucco or non-embossed
Gauge:	Exterior: 26, 24, 22 ga Interior: 26, 24, 22 ga
Post fabrication (optional):	Trimless ends (Manufacturing limitations apply. Please contact us for detailed information)

### For all KS Series Panels

Insulation core:	PIR
Length:	8' - 53'
Width:	24", 30", 36", 42"
Thickness:	2", 2.5", 3", 4", 5", 6"
Standard reveal option:	Vertical: 1/8" or 3/8" Horizontal: 3/8"
Orientation:	Vertical or horizontal
R-value:	≈ 7.2 per inch per ASTM @ 75°F mean temperature ≈ 8.25 per inch per ASTM C518 @ 35°F mean temperature



# KS Series Data Sheet

## Insulated Wall Panel System

### Performance Testing and Approvals

The following applies to all products within the KS Series: Azteco™, Micro-Rib, Mini Micro-Rib, Mini-Wave, Shadowline.

Test	Procedure	Results			
Fire	FM 4880	Passed: Class 1 Fire Rating of Building Panels or Interior Finish Materials*			
	ASTM E84	Flame Spread: 25 or Less / Smoke Developed: 450 or Less			
	CAN/ULC-S101	Fire Endurance Tests: 10 min (Fastener conditions vary depending on product thickness. Please contact technical.NA@kingspanpanels.com for detailed information.)			
	CAN/ULC-S102	Flame Spread: 35 / Smoke Developed: 120 for panel insulation core			
	CAN/ULC-S127	Flame Spread: <500 for foam core			
	CAN/ULC-S138	Passed: Fire growth of foamed plastic insulated building panels in a full scale room configuration			
	CAN/ULC-S134	Passed: Standard method of test for fire of exterior wall assemblies			
	NFPA 259	Tested for potential heat of building materials			
	NFPA 268	Passed: Standard test method for determining ignitability of exterior wall assemblies using a radiant heat energy source			
	NFPA 285	Passed: Standard Fire Test Method for Evaluation of Fire Propagation Characteristics of Exterior Non-Load-Bearing Wall Assemblies Containing Combustible Components			
Structural	FM 4881	Passed: For complete wind pressure ratings please contact Kingspan Technical Services or refer to ApprovalGuide.com*			
	ASTM E72	Vacuum chamber tested. Panel load / span and deflection tables are available			
Thermal Transmission	ASTM C518	Thermal Performance at 75°F mean temperature		Thermal Performance at 35°F mean temperature	
		Thickness	R-Value	Thickness	R-Value
		2"	14.4	2"	16
		2.5"	18.0	2.5"	20
		3"	21.6	3"	24
		4"	28.8	4"	32
		5"	36.0	5"	40
		6"	43.2	6"	48
		Air Infiltration	ASTM E283	0.01 CFM/ft² of Panel Area at 6.24 psf	
Water	ASTM E331	No uncontrolled water penetration at 20 psf differential pressure			
	AAMA 501.1	Dynamic water pressure testing – no sign of water leakage at 15 psf			
Bond Strength	ASTM D1623	Panels tested for tensile bond strength of metal to foam			
Skin Delamination		No skin delamination with direct pull off pressure up to 1188 psf			
Regional Approvals	City of LA (LADBS)	LARR 26092 (width < 42", max. thickness: 4"; width = 42", max. thickness: 6")			
	FL Product Approval	FL 31365.2			
	Miami-Dade Listing	NOA 20-1102.04			
	SFM 12-7A-1 (Brushfire)	Intertek Spec ID: 58965			
	TX Dept of Insurance	EC-127			
	NRCan	Walk-in freezers: Min. thickness: 4" Walk-in coolers: Min. thickness: 5" Please see NRCan.gc.ca website for listing details			

\*Thickness: 2"-6", Width: 24"-42", Min. panel length: 8', Min. gauge: Exterior 26 ga, Interior 26 ga.

For FM compliance, systems must be installed in accordance with FM installation specifications as detailed on ApprovalGuide.com. Please contact technical.NA@kingspanpanels.com for detailed information or refer to ApprovalGuide.com.



#### Contact Details

DeLand, FL: 877-638-3266

Modesto, CA: 800-377-5110

[www.kingspanpanels.us](http://www.kingspanpanels.us)

Caledon, ON: 866-442-3594

Langley, BC: 877-937-6562

[www.kingspanpanels.ca](http://www.kingspanpanels.ca)

For the product offering in other markets please contact your local sales representative or visit [www.kingspanpanels.com](http://www.kingspanpanels.com)  
To ensure you are viewing the most recent and accurate product information, please visit [www.kingspanpanels.com](http://www.kingspanpanels.com)

Care has been taken to ensure that the contents of this publication are accurate, but Kingspan Limited and its subsidiary companies do not accept responsibility for errors or for information that is found to be misleading. Suggestions for, or description of, the end use or application of products or methods of working are for information only and Kingspan Limited and its subsidiaries accept no liability in respect thereof.  
© Kingspan, and the Lion Device are Registered Trademarks of the Kingspan Group plc in the US, Canada and other countries. All rights reserved. © Kingspan Insulated Panels Inc.